

M6Vet
Hand-carried Ultrasound System

Your daily success for Veterinary



Your daily success for Veterinary

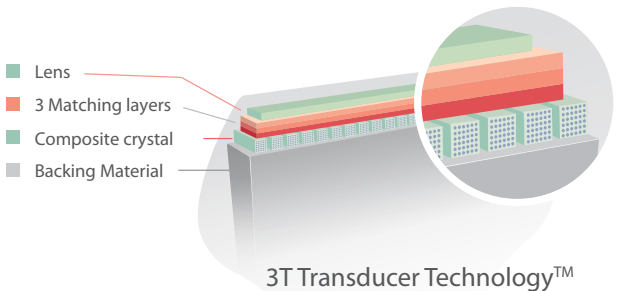
For modern pet clinics, what are the biggest challenges you need to face everyday? How do you expand clinical capabilities to offer new service? How do you maximize the utilization of your ultrasound scanner to increase the throughput? How do you satisfy the needs of patients and referrers to differentiate your clinics from others?

If the problems above are what you concern about, then Mindray's hand-carried ultrasound system M6Vet is the answer. With 3T Transducer Technology™, comprehensive vet share service and reproduction package, and one push button iTouch™ image optimization technology, M6Vet enables your daily success for veterinary routine exams.

3T Transducer Technology™

Mindray's unique transducer technology to increase image bandwidth and transmission efficiency:

- Triple-matching layer design
- Total-cut design
- Thermal-control design



C11-3s, micro-convex array
Small animal's abdomen, cardiac



7L4s, linear array
Big animal's tendon, small animal's abdomen, small parts



P7-3s, phase array
Small animal's cardiac



6LE5Vs, linear intrarectal
Big animal intrarectal

Professional Design for Veterinary Use

- Veterinary information management tool for more than 6 types of animals
- Up to 22 veterinary body marks
- Abdomen, cardiac, OB, vascular, small parts and MSK exam modes and analysis packages for different animals
- Veterinary OB table
- User-defined formulas for more applications



EQUINE



BOVINE



OVINE



CANINE



FELINE



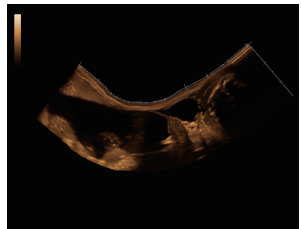
DOLPHIN

Intelligent Workflow

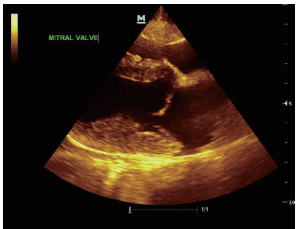
- iTouch™: Intelligent image optimization for B, color and PW mode
- Smart Tracking: Continuously track the color flow and optimize the best color box in real time scanning
- Smart Doppler: Automatic optimize the size and position of color box and doppler gate placement to ensure optimal signal color and spectral doppler sampling

Comprehensive Functionalities

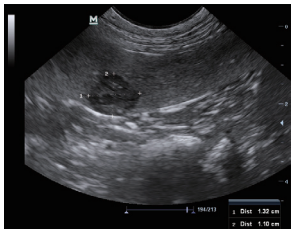
- iScape™: real-time panoramic imaging with velocity indicator, a very useful tool to evaluate the racing horse tendon
- Free Xros™ Imaging: Anatomical M mode, it can support EF measure offline and significantly shorten the exam time
- Advanced cardiac function assessment packages including Free Xros™ CM Imaging: Anatomical Curved M mode and Tissue Doppler Imaging



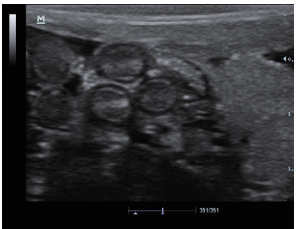
Turtle-Bladder-iScape



Mitral Valve



Canine Spleen Mass



Turtle-Ovary & Spawn

High capacity battery and data storage

- 1TB hard drive
- Up to 90 min scanning time with battery
- 5.5 kg light weighted design with travelling case for outdoor diagnosis
- Raw data enables advanced post-processing when the exams completed

Versatile multi-functional trolley

- External LCD monitor providing more perspective
- Up to 3 transducer connectors
- Height adjustable platform
- External DVD R/W storage
- Compact design enables higher flexibility

